

# National Center for Child Health and Development Immunization flow diagram

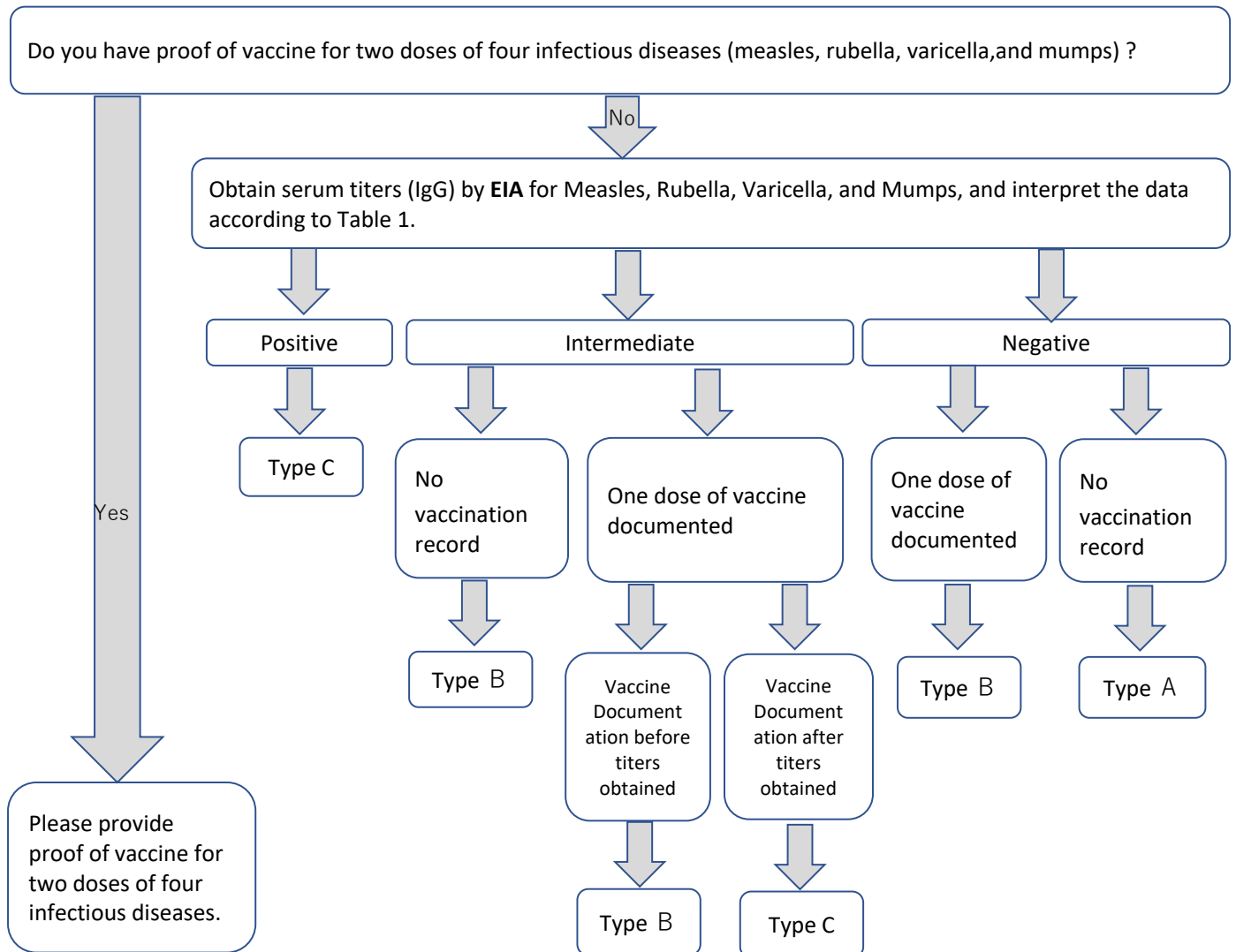


Table 1. Titers considered protective against infection at NCCHD

	Positive	Intermediate	Negative
Measles	EIA (IgG titers) : $\geq 16$	EIA (IgG titers) : $2 \sim < 16$	EIA (IgG titers) : $< 2$
Rubella	EIA (IgG titers) : $\geq 8$	EIA (IgG titers) : $2 \sim < 8$	EIA (IgG titers) : $< 2$
Varicella	EIA (IgG titer) : $\geq 4$	EIA (IgG titers) : $2 \sim < 4$	EIA (IgG titers) : $< 2$
Mumps	EIA (IgG titer) : $\geq 4$	EIA (IgG titers) : $2 \sim < 4$	EIA (IgG titers) : $< 2$

※Data valid for 5 years

Table 2. Actions according to designated type

Type A	Receive two doses of vaccine at least one month apart.※1、 Provide proof of vaccination※2
Type B	Receive one doses of vaccine.※1、 Provide proof of vaccination※2
Type C	No need for vaccination

※1 We will not offer vaccines at our institution  
(combination vaccines such as MMR, MMRV, MR are acceptable)

※2 Proof of vaccination should document the following  
(Name of vaccine, date of vaccination, lot number, name of medical institution, physicians name)